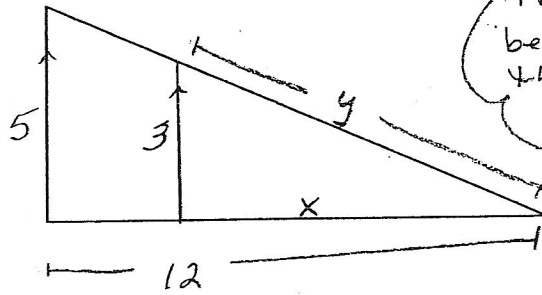


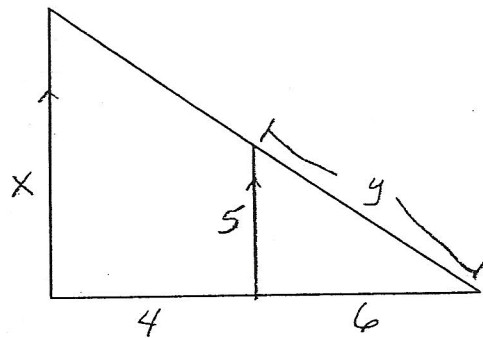
Proportion Review

Pull the triangles apart before you write the proportion.

1. $\frac{2}{6} = \frac{x}{3}$

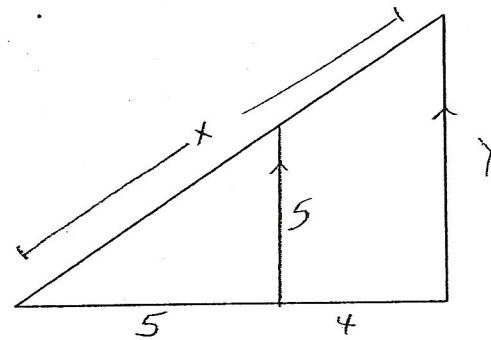


2. $\frac{6}{5} = \frac{y}{10}$



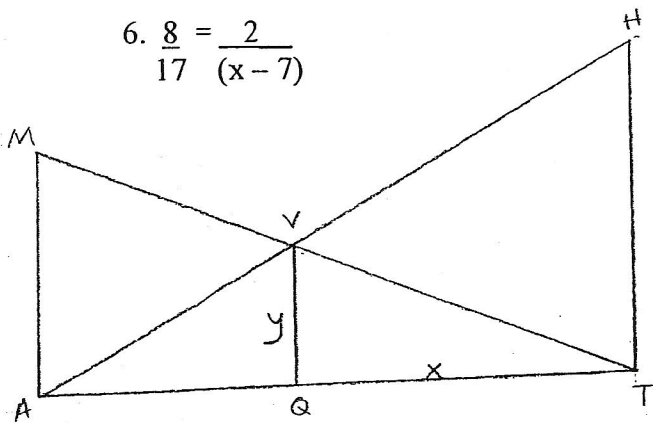
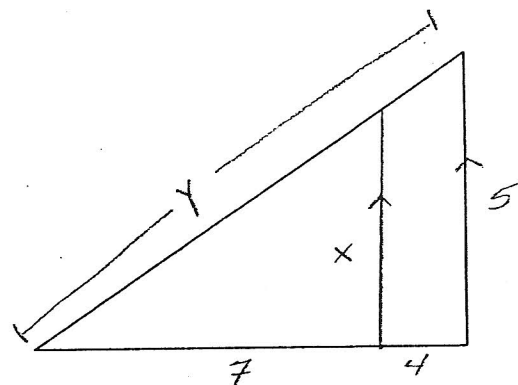
3. $\frac{23}{4} = \frac{46}{a}$

4. $\frac{3}{4} = \frac{x}{16}$



5. $\frac{7}{3} = \frac{(x+3)}{6}$

6. $\frac{8}{17} = \frac{2}{(x-7)}$



- MA = 28
- AT = 42
- AH = 46.5
- MT = 50.5

Find all lengths